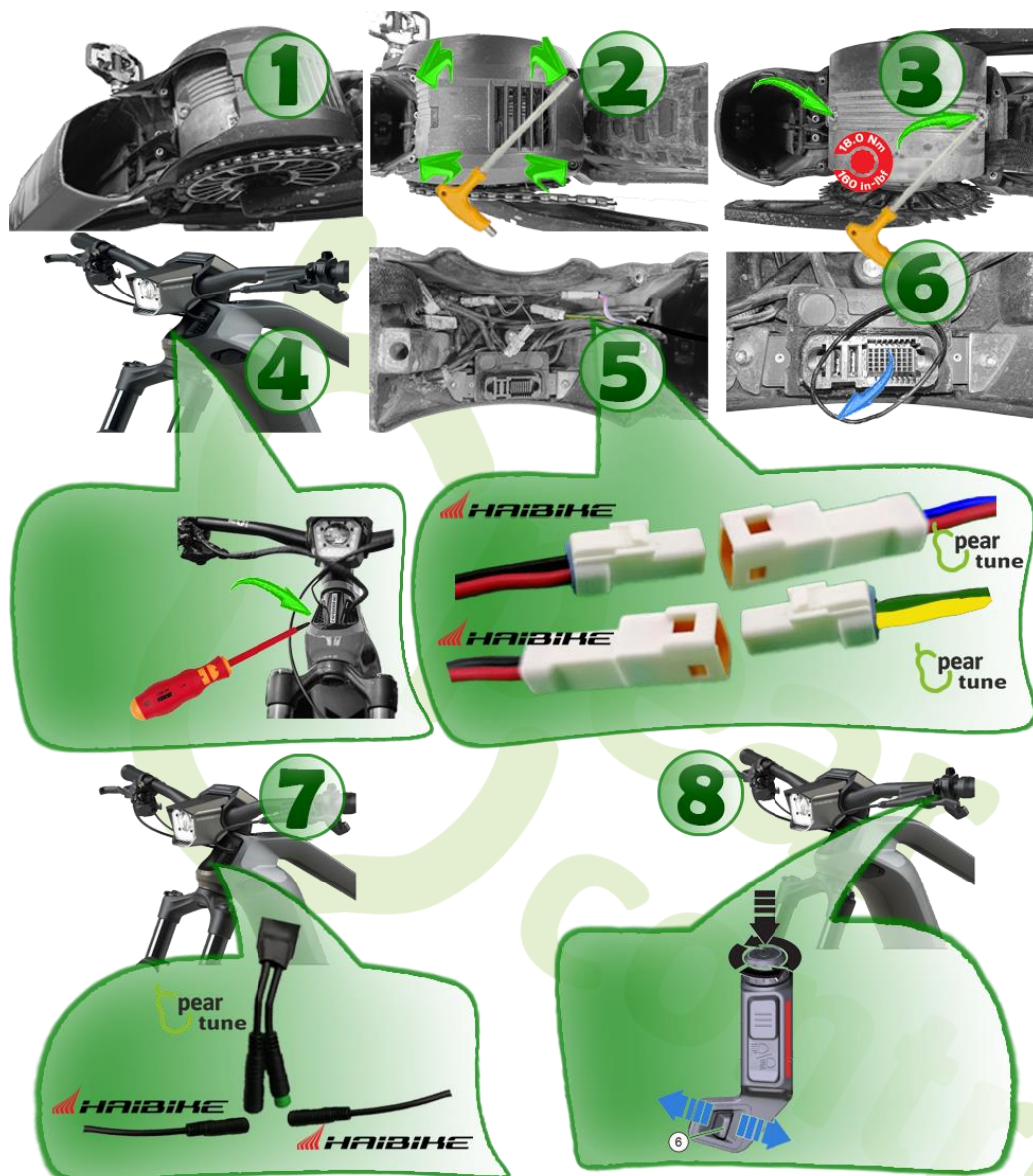


## HAIBIKE - FLYON - 2020



1. First remove the plastic cover and disconnect the battery. **Fig.1**

2. Remove the four screws of the motor cover (Note: there is a GPS unit under the cover) **Fig.2**

3. After removing the chain, remove both screws (loud click will occur when loosening - this is a safeguard against unintentional loosening) and remove the motor. **Fig.3**

4. Remove the cable cover and route the wiring from the speed sensor along the battery to the motor **Fig.4**

5. Disconnect the connectors from the speed sensor **Fig.5** (the body of the connector is marked in red) and connect it with PearTune MSO.

6. When reassembling, make sure that the seal at the connector is placed correctly.

7. Disconnect the display and connect PearTune MSO to the DIN connectors. **Fig.7**

8. Switch on (Switch off) PearTune MSO by a short quick double press of button no. 6 – **Fig.8** left and right according to the blue arrows. PearTune MSO activity appears on the display with a short display of 9km/h and shutdown with a short display of 2km/h.